

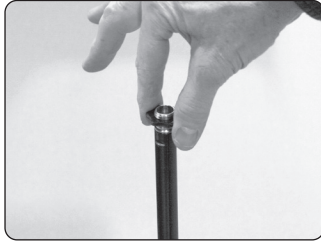
ProMAX™ v2

Installation & User Guide

Thank you for purchasing the **Auralex® Acoustics ProMAX v2™**. This is a highly effective portable acoustic absorption device that can be easily positioned anywhere in a room to achieve the desired effect.



- 1 Set up stand and extend the top tube. Firmly tighten the pole into the base. Extend the top tube and firmly tighten the adjustment collar.
- 2 Remove star washer from the top of the stand.

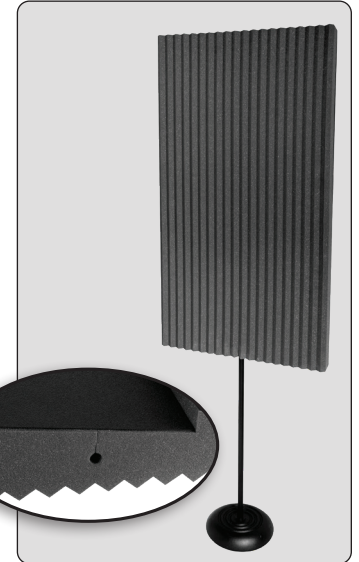


- 4 Orient the foam side towards you to absorb acoustical reflections. Position the angled / reflective side of the **ProMAX v2** facing you to redirect acoustical energy relative to your listening position to achieve the desired effect.

When using the reflective side the panel's overall angle can be adjusted by rotating it on the stand. When using pairs of **ProMAX v2s** flanking the listening position, orient the angled reflective surfaces in the same manner for a balanced image and soundstage. To reverse the orientation of the angled surfaces swap the panel positions from one side of the listening position to the other.



- 3 Insert tube into the hole in the center of the **ProMAX v2** panel. Assistance is recommended.



Real-World Acoustics®

964-213.ProMAX v2 User Guide (03/05/2020 - 1:04 PM)

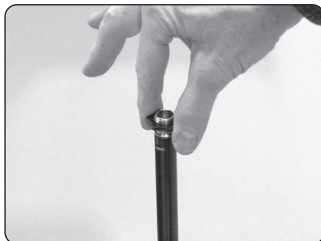
ProMAX™ v2

Installation & User Guide

Thank you for purchasing the **Auralex® Acoustics ProMAX v2™**. This is a highly effective portable acoustic absorption device that can be easily positioned anywhere in a room to achieve the desired effect.



- 1 Set up stand and extend the top tube. Firmly tighten the pole into the base. Extend the top tube and firmly tighten the adjustment collar.
- 2 Remove star washer from the top of the stand.

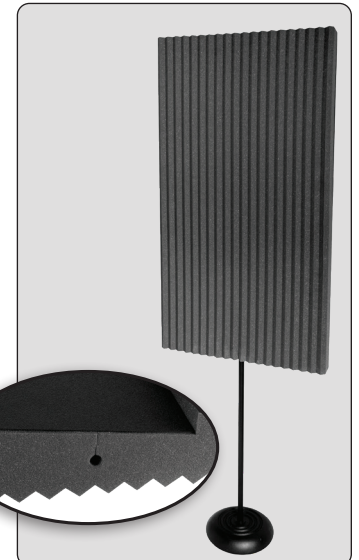


- 4 Orient the foam side towards you to absorb acoustical reflections. Position the angled / reflective side of the **ProMAX v2** facing you to redirect acoustical energy relative to your listening position to achieve the desired effect.

When using the reflective side the panel's overall angle can be adjusted by rotating it on the stand. When using pairs of **ProMAX v2s** flanking the listening position, orient the angled reflective surfaces in the same manner for a balanced image and soundstage. To reverse the orientation of the angled surfaces swap the panel positions from one side of the listening position to the other.



- 3 Insert tube into the hole in the center of the **ProMAX v2** panel. Assistance is recommended.



Real-World Acoustics®

964-213.ProMAX v2 User Guide (03/05/2020 - 1:04 PM)