

Thank you for purchasing your **MAX-Wall™ System**. The **MAX-Wall** system is modular, portable and ideal where permanent installation of absorption treatment is not possible. It's flexibility allows you to easily change the acoustics of your environment for a variety of situations and can be expanded as your needs change. For more information please visit us at www.Auralex.com.

MAX-Wall™ System Contents:

MAX-Wall 211

- (2) 4.375" x 20" x 48" Panels
- (1) Window Kit Panel
- (1) MAX-Stand

MAX-Wall 420

- (4) 4.375" x 20" x 48" Panels
- (2) MAX-Stands

MAX-Wall 831

- (8) 4.375" x 20" x 48" Panels
- (1) Window Kit Panel
- (3) MAX-Stands
- (1) 19" Extension

MAX-Wall 1141VB

- (11) 4.375" x 20" x 48" Panels
- (1) Window Kit Panel
- (4) MAX-Stands
- (12) Corner Couplers
- (1) 19" Extension

MAX-Wall™ Accessories:

MAX-Wall 200

- (2) 4.375" x 20" x 48" Panels

MAX-Wall Window Kit

- (1) 4.375" x 20" x 48" Window Panel
- (1) Acrylic Window

MAX-Wall™ Assembly

1. Setup the **MAX-Stand™** to the desired height and extend top tube. Remove star washer if present (*Photo A*). If the top panel is to be above 5'4" use the supplied extension tube (*MW-831 & MW-1141VB models only*) (*Photo B*).
2. Slowly and carefully remove the inner foam core from the center of each **MAX-Wall Panel** (*Photo C*).
3. Insert stand into hole in **MAX-Wall Panel** and push down to desired height (*Photo D*). Continue adding **MAX-Wall Panels** until the desired height is achieved.



A.



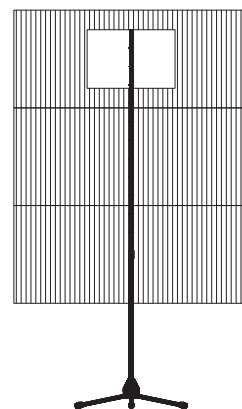
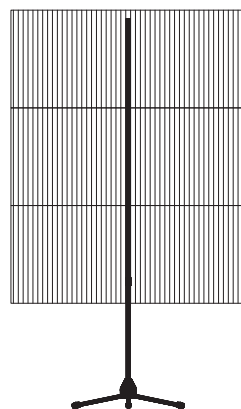
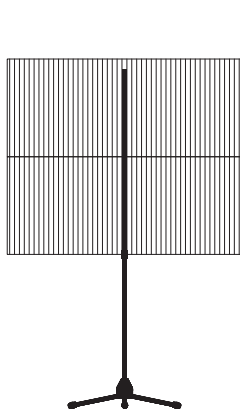
B.



C.



D.



Possible Panel Configurations:
(One wall section shown)

MAX-Wall Window Kit:

- Remove the die cut piece of foam from the **MAX-Wall** window panel
- Install the panel on the stand
- Then install the Acrylic window in the opening in the foam panel

Auralex® Acoustics, Inc.

1-800-959-3343 | 317-842-2600 | Auralex.com
9955 Westpoint Drive, Suite 101, Indianapolis IN USA 46256

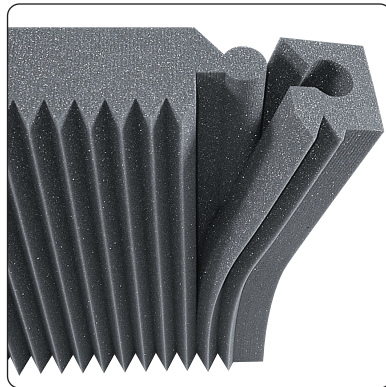
MAX-Wall Assembly *(continued)*

Locking Panels Together:

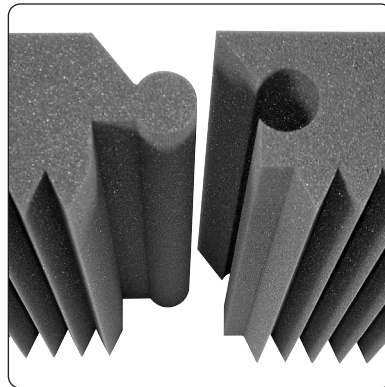
5. The ends of each panel are designed to be locked together to create a continuous acoustical wall. Decide which set of panels are to be interconnected and remove the adjacent end pieces. If needed, flip the **MAX-Wall** panel over so the panels correctly connect male to female. Remove the end caps from each panel (*Photo E*) and connect adjacent panels as shown in photos (*Photo F*). Panels can then be hinged between 120° and 180°. If the end caps are to be reinstalled in the future place match marks in an inconspicuous location on each end cap and panel end as the cap-to-panel fit varies a bit. If adjacent panels are to be hinged 90°, use our optional **MAX-Wall CornerCouplers™** (*Photo G*). Leave the end caps in place at the ends of your array for best appearance.

MAX-Wall Tips:

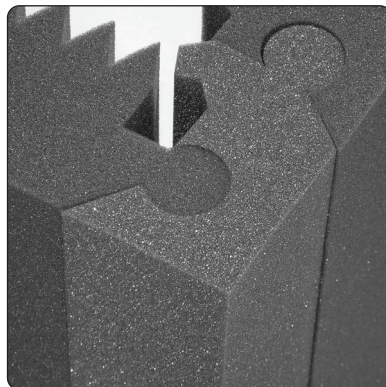
1. Some panels may show a slight variation in color/shade due to the foam production and cutting process. Panels can be sorted ahead of assembly for best cosmetic match.
2. If you need to extend the height of the **MAX-Wall** beyond the capabilities of the **MAX-Stand** and it's extension, 5/8" PVC pipe can be placed over the smaller diameter top of the stand and cut to length to support additional panels.
3. If you wish to bend a **MAX-Wall** panel in the middle you can open the puzzle lock feature on the rear of the panel to "bend it" (*Photo H*). Be aware that while the puzzle lock can be restored, it may not close as tightly as before. Unlocked panels are best used when their ends are connected to other adjacent panels to prevent sagging.



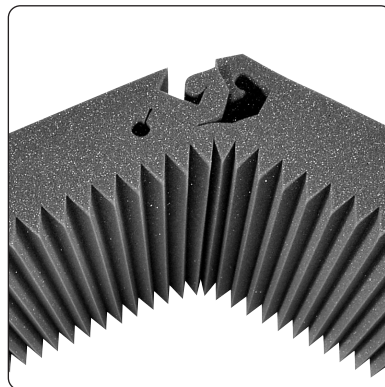
E.



F.



G.



H.

