



SonicPrint™

Artistic Acoustical Panels



SonicPrint panels help control excessive reverberation and echo that are caused by hard surfaces like drywall, concrete or wood. They offer the same acoustic benefit as our ProPanels™ with a customized aesthetic. Strategically placing SonicPrint panels on the walls will help absorb unwanted sound energy so you can hear your music and movies as they were intended.

To create SonicPrint we have combined our industry-standard absorptive fiberglass core with a Dye-sublimation printing process that allows the fabric to remain acoustically transparent while maintaining the vivid color of the image. SonicPrint panels are available in 1" & 2" thicknesses in sizes up to 4' x 8'.



SIZING REQUIREMENTS

The information below will help you size your images for the best quality on Auralex® SonicPrint™ Panels. If you have any questions please contact us at: SonicPrint@Auralex.com.

Sizing and DPI:

Images should be no smaller than 150dpi (Dots Per Inch). ***TO SCALE**, 300dpi images are higher resolution and are NOT necessary as long as the image is to scale. *72 dpi is TOO small and will be rejected.* See Resolution Example at right.

***TO SCALE means actual size:**

EXAMPLE: 24" x 48" = 3600px X 7200px @ 150 dpi Including 8" wrap-around (4" on all sides).

Printable Sides and Wrap Around Fabric:

All standard panels have a 2" thickness as shown on Diagram A as printable sides. It is recommended if possible to account for 4" on each side. This will cover the 2" printable areas and the extra wrap around fabric needed to finish the panel and give it a clean look.

Format:

High Resolution TIFF, EPS, PSD, JPEG, PNG & AI files are accepted formats for printing.

Final Specifications:

2' x 2' Panel

Actual Size (Face): 24" x 24"

Printable Sides and Wrap-around: 32" x 32"

2' x 4' Panel

Actual Size (Face): 24" x 48"

Printable Sides and Wrap-around: 32" x 56"

4' x 8' Panel

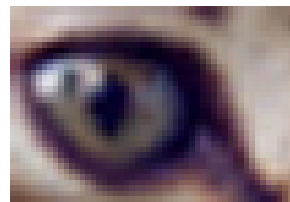
Actual Size (Face): 48" x 96"

Printable Sides and Wrap-around: 56" x 104"

The ratio of dimensions and orientation (i.e. portrait/tall vs. landscape/wide) of the image must closely match the ratio of the panel dimensions and orientation desired. For example, a square image will fit on a square panel and rectangular image with fit on a rectangular panel.

All copyrightable materials are © Copyright Auralex Acoustics, Inc. 1994-2020. Auralex, Total Sound Control and Real-World Acoustics are registered trademarks, and SonicPrint and ProPanels are trademarks, of Auralex Acoustics, Inc. All rights reserved. Proudly designed and manufactured in the U.S.A.

Resolution Example



72 dpi



150 dpi

 **IMPORTANT:** Images taken directly from the web will not work due to the 72 dpi resolution and smaller size.

COLOR DISCLAIMER: Due to the variance of different computer monitors, video card color depths and printers, Auralex Acoustics cannot guarantee that the color(s) perceived on your supplied artwork will exactly match the SonicPrint products shipped. The PDF proofs are for reference purposes only. If your project is color critical, you will need to supply a physical print for us to match.

SAMPLE SonicPrint Layout

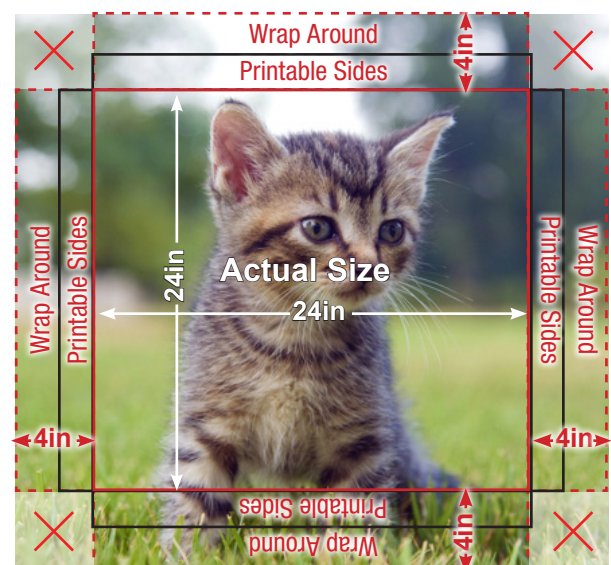


Diagram A