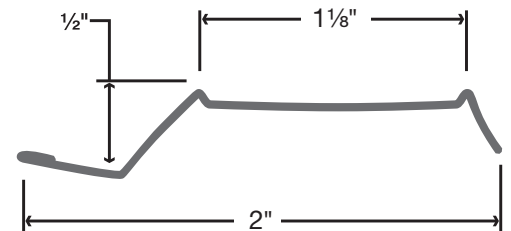
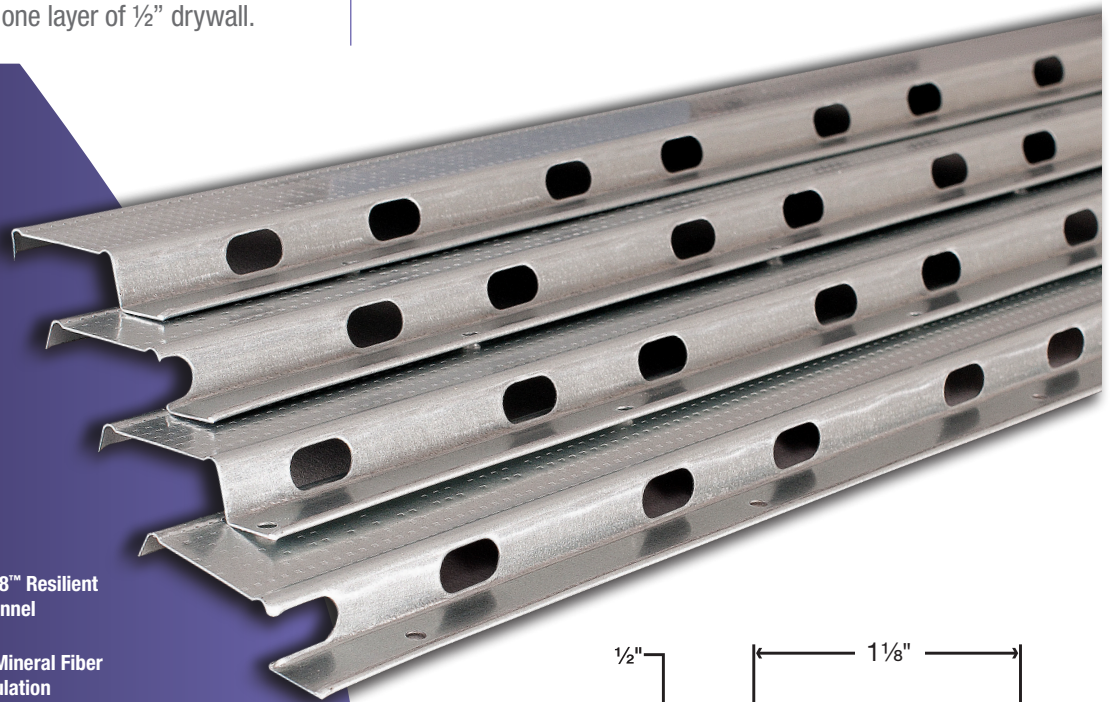
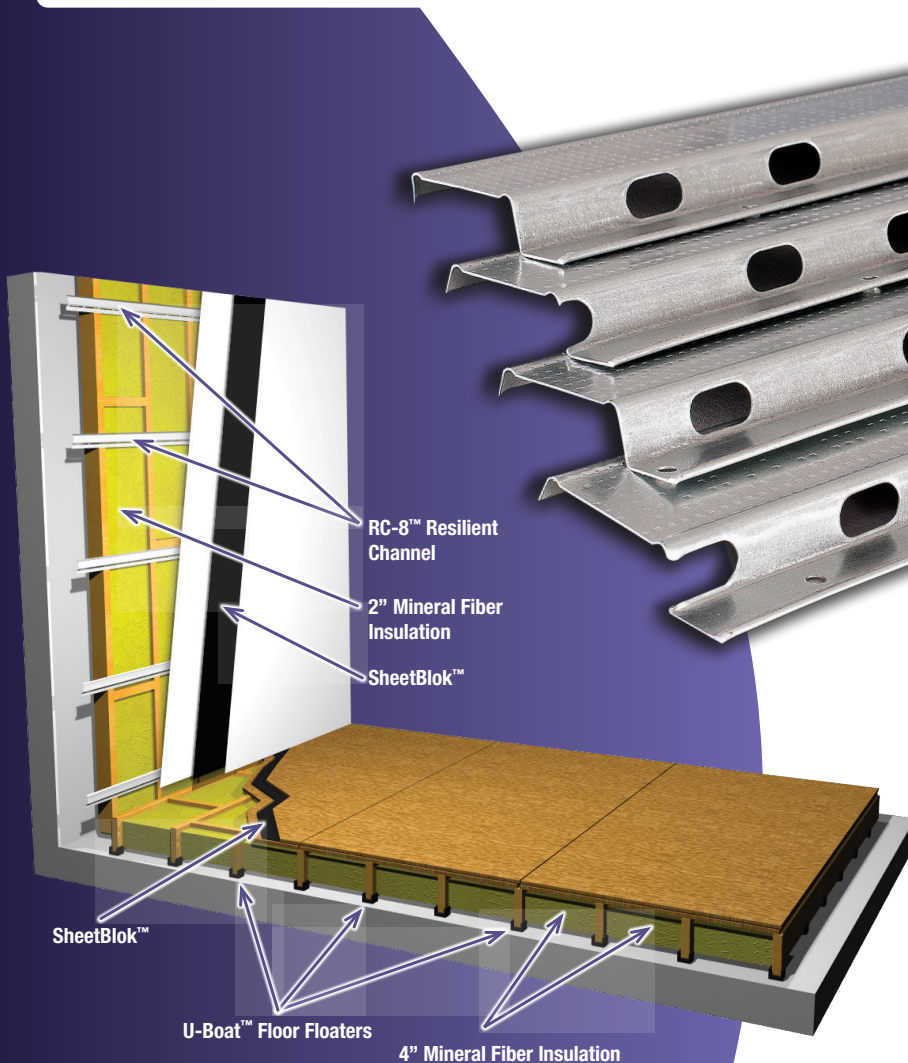


RC-8™ Resilient Channel



- Mechanically decouples drywall layer from the supporting stud structure to reduce sound transmission through walls.
- Greatly improves the sound transmission characteristics of the wall or ceiling system.
- Engineered profile hangs drywall layer away from studs creating a ½" airspace.
- Up to two layers of 5/8" drywall may be hung on RC-8™; or one layer 5/8" drywall, one layer of Auralex® SheetBlok™ mass loaded vinyl barrier and one layer of ½" drywall.

Auralex's RC-8™ Resilient Channel is a specifically designed durable, yet flexible 25 gauge steel channel used to attach drywall indirectly to the supporting wall structure. This mechanical decoupling increases the sound transmission class of the wall or ceiling system. The performance of RC-8™ can be enhanced using dual layers of differing thicknesses of drywall with a layer of Auralex® SheetBlok™ in between.



COMPLIMENTARY PRODUCTS:

- SheetBlok™ Sound Barrier
- U-Boat™ Floor Beam Float Channels
- Mineral Fiber Insulation
- StopGap™ Acoustical Sealant

All copyrightable material ©Copyright Auralex Acoustics, Inc. 1994-2020. Auralex, Total Sound Control and Real-World Acoustics are registered trademarks, and RC-8, SheetBlok, U-Boats and StopGap are trademarks, of Auralex Acoustics, Inc. Proudly designed and manufactured in the U.S.A. All rights reserved.

Real-World Acoustics®

1-800-959-3343 / 317-842-2600
9955 Westpoint Drive, Suite 101, Indianapolis IN USA 46256

1386-216.RC-8 Spec Sheet (12/27/2019 - 9:43 AM)